



Pocket WinTOTO Advance Installation Guide

Assemblix
集合科技
Established Since 1996

133 New Bridge Road,
#10-05 Chinatown Point
Singapore 059413
Tel: 65326845
Fax: 65326846

August 2006
Pub No. 1600088800B
Part No. 01-111392-008

Copyright

Information furnished by Assemblix Technology Pte Ltd is believed to be accurate and reliable. However, no responsibility is assumed by Assemblix Technology for its use, nor for any infringements of patents or other rights of third parties which may result from its use. No license is granted by implication or otherwise under any patent or patent right of Assemblix Technology. Assemblix Technology reserves the rights to change specifications at any time without notice.

Copyright © 2008 by
Assemblix Technology Pte Ltd

Trademarks:

Assemblix is a registered trademark and Win4D is a trade mark of Assemblix Technology Pte Ltd. Other product and company names are trademarks or registered trademarks of their respective holder.

Limited Warranty

Limited Warranty Statement: Assemblix Technology Pte Ltd warrants its products to be free from defects in workmanship and materials under normal use and services, for the applicable warranty term. All Assemblix products carry a standard 90-days limited warranty from the date of purchase from Assemblix or its Authorized Reseller. Assemblix may, at its own discretion, repair or replace any product not operating as warranted with a similar product, during the applicable warranty term.

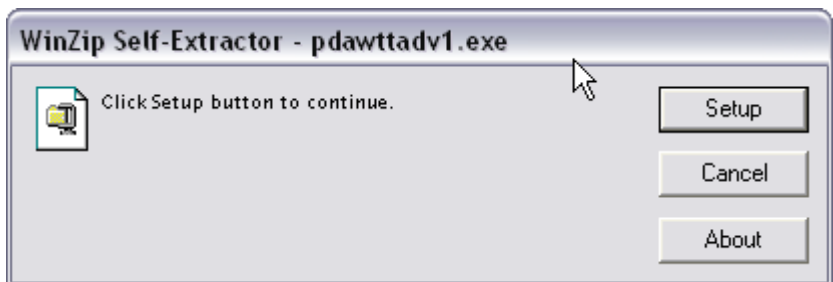
Pocket WinTOTO Advance Setup

The Pocket WinTOTO Advance program self extract file run under Windows 98/ME/2000/XP/Vista. When you double click the file, you should see the install screen.

1.Click "OK" to start the installation.



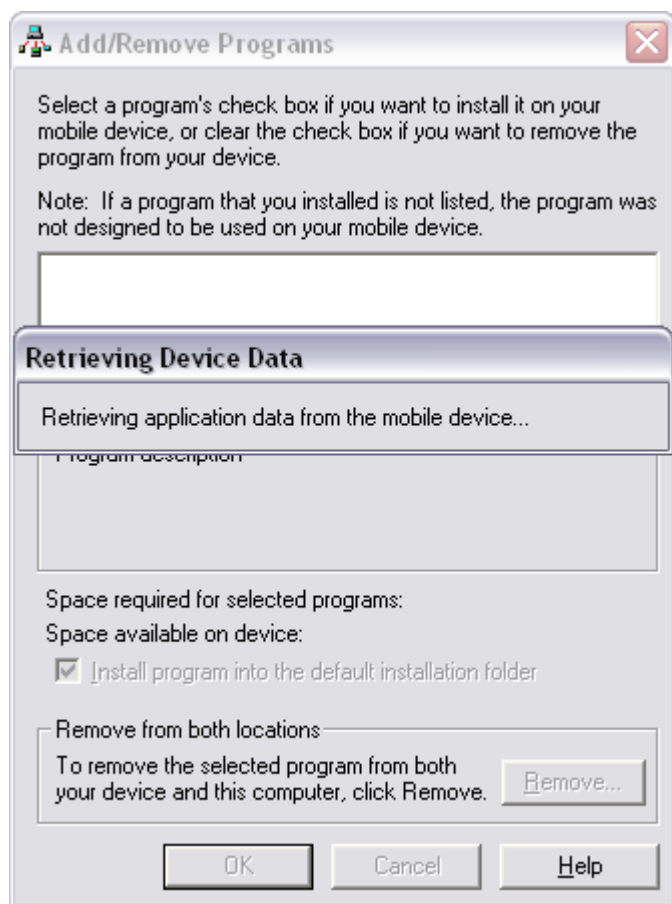
You should see this installation screen



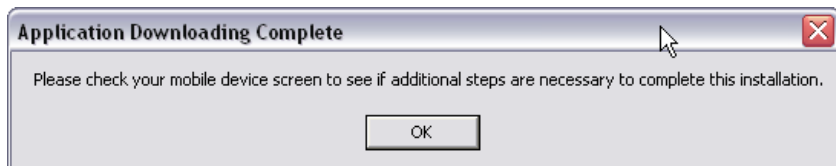
2.It will copy the necessary files into your computer and start setup program as shown below.



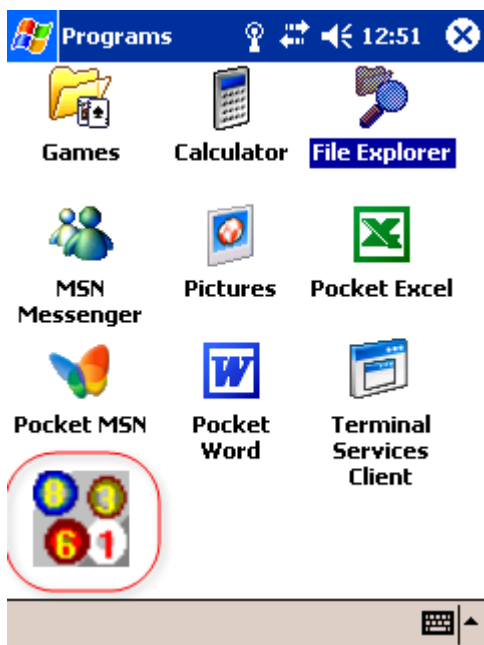
3. Click “Install” to start the installation.



4. You should see the Application Downloading Complete dialog as below.



5. Check your Pocket PC for the program.

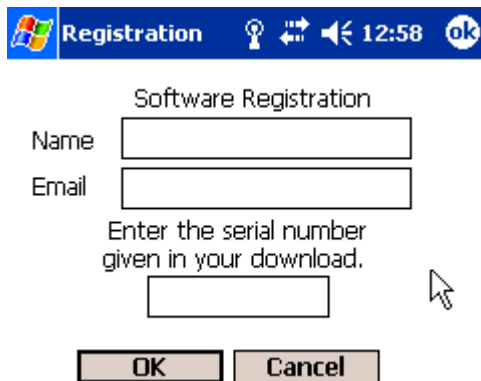


Starting Pocket WinTOTO Advance

1.Double Click on the Pocket WinTOTO icon to start.



2.If you are using the software for the first time, you will be prompt register online..

A screenshot of a Windows XP-style dialog box titled "Registration". The title bar includes the Windows logo, the word "Registration", and system icons for help, network, volume, and a clock showing 12:58. The dialog box contains the text "Software Registration" and three input fields: "Name", "Email", and "Enter the serial number given in your download.". Below the input fields are "OK" and "Cancel" buttons. A mouse cursor is visible over the "Enter the serial number" field.

Registration

Software Registration

Name

Email

Enter the serial number given in your download.

OK Cancel

3.You should key in your full name and your email address according to the same you use in downloading the program.Make sure you have access to Internet from your device.

4.If you have a firewall program installed in your computer, please make sure you allow this program to go online for registration.